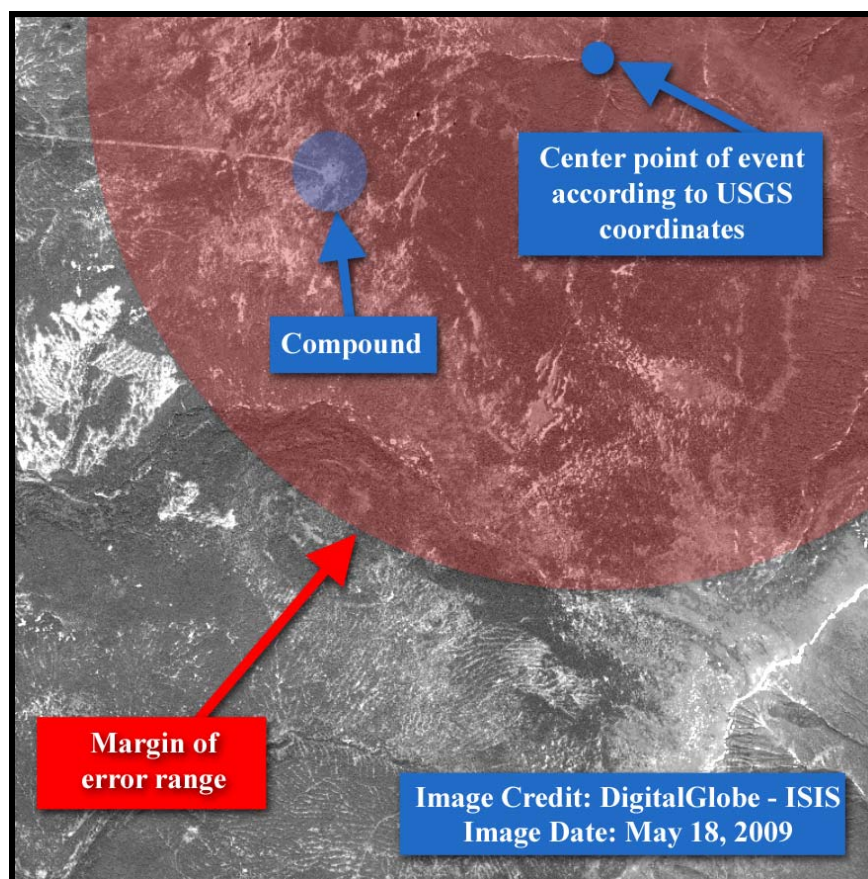




**May 27, 2009**

### **Commercial Satellite Imagery of 2009 Nuclear Test Site in North Korea**

ISIS has obtained commercial satellite imagery from DigitalGlobe of the area near the approximate coordinates of the North Korean nuclear test from May 18, 2009—approximately a week before the test (see figure 1) . There is a notable compound within two kilometers of the 2009 event center-point from the US Geological Survey (USGS) (see figure 2). The USGS center point coordinates have a margin of error of approximately 3.8 kilometers. ISIS has also obtained imagery from May 14, 2009 of the site of the 2006 nuclear test tunnel entrance in North Korea. (see figure 3). The location of the tunnel entrance and the support buildings for the 2009 nuclear test is unclear.



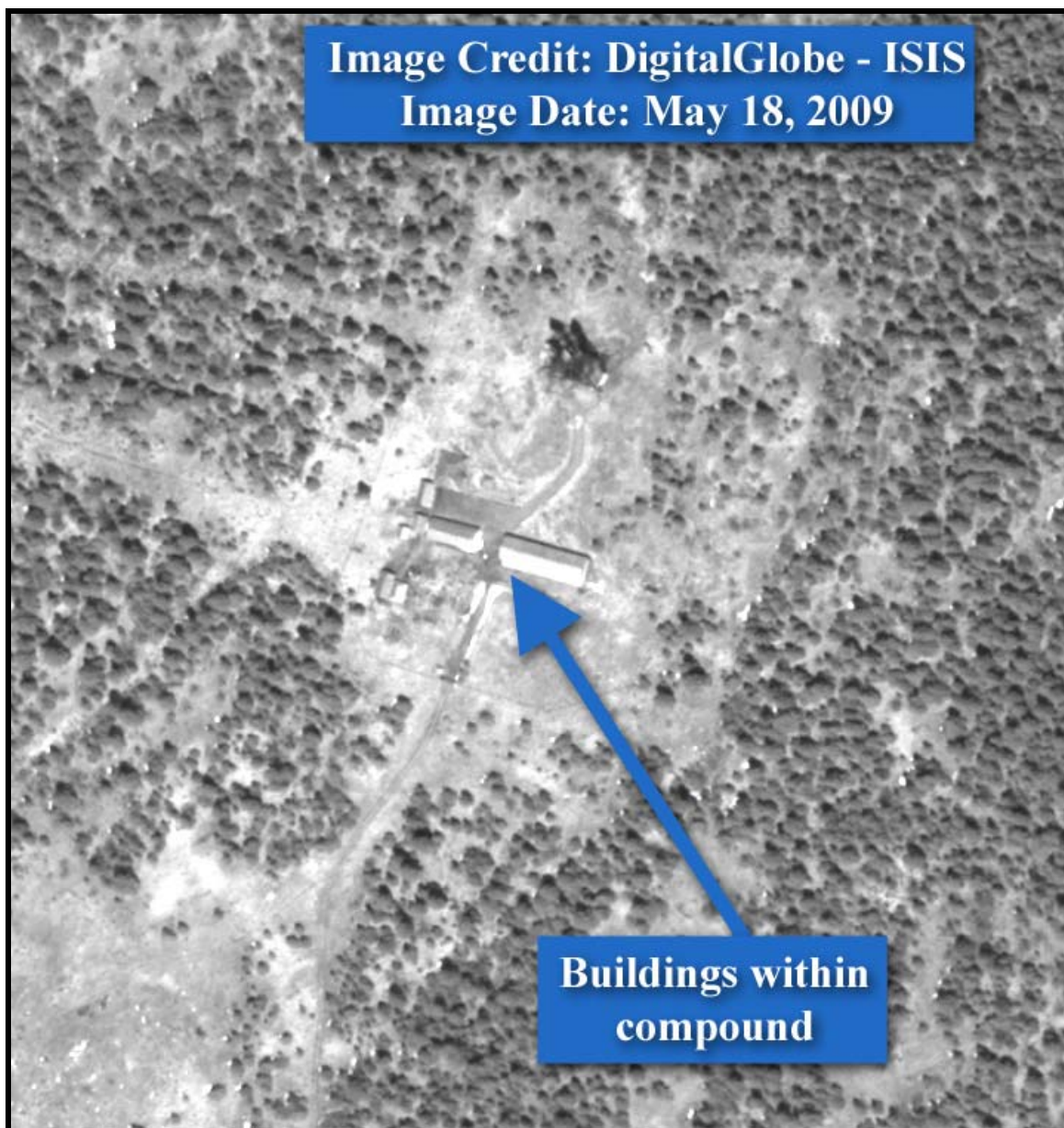
**Figure 1. Wide view of approximate event site in North Korea. The USGS coordinates have a margin of error of approximately 3.8 kilometers.**

[Banner image credit: DigitalGlobe-ISIS]

236 Massachusetts Avenue, NE, Suite 500 Washington, DC 20002

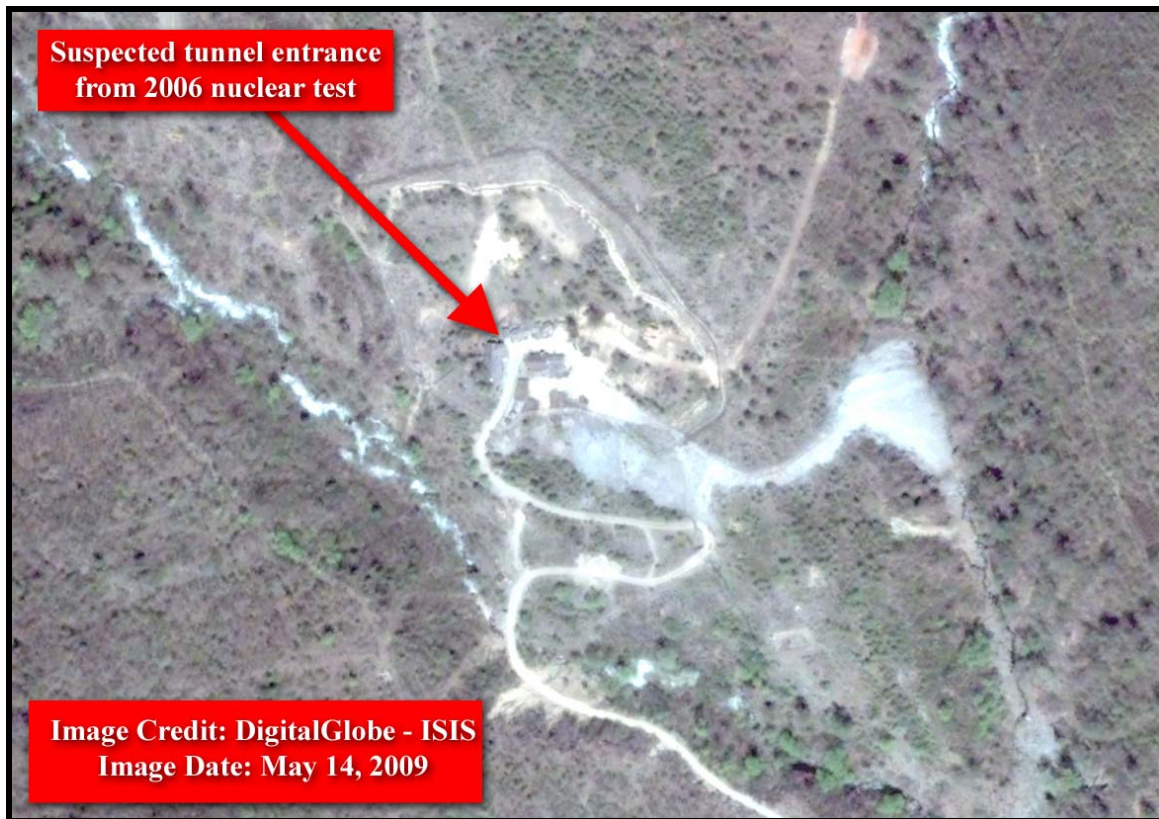
TEL 202.547.3633 • FAX 202.547.3634

E-MAIL [isis@isis-online.org](mailto:isis@isis-online.org) • [www.isis-online.org](http://www.isis-online.org)



**Figure 2. Buildings within compound surrounded by a fence or wall. This compound is approximately 1.9 kilometers from the center-point of the event coordinates from the USGS.**





**Figure 3. May 14, 2009 image of the suspected tunnel entrance for the 2006 nuclear test in North Korea. This site is approximately 5.5 kilometers from the center point coordinates of the 2009 event from the USGS.**